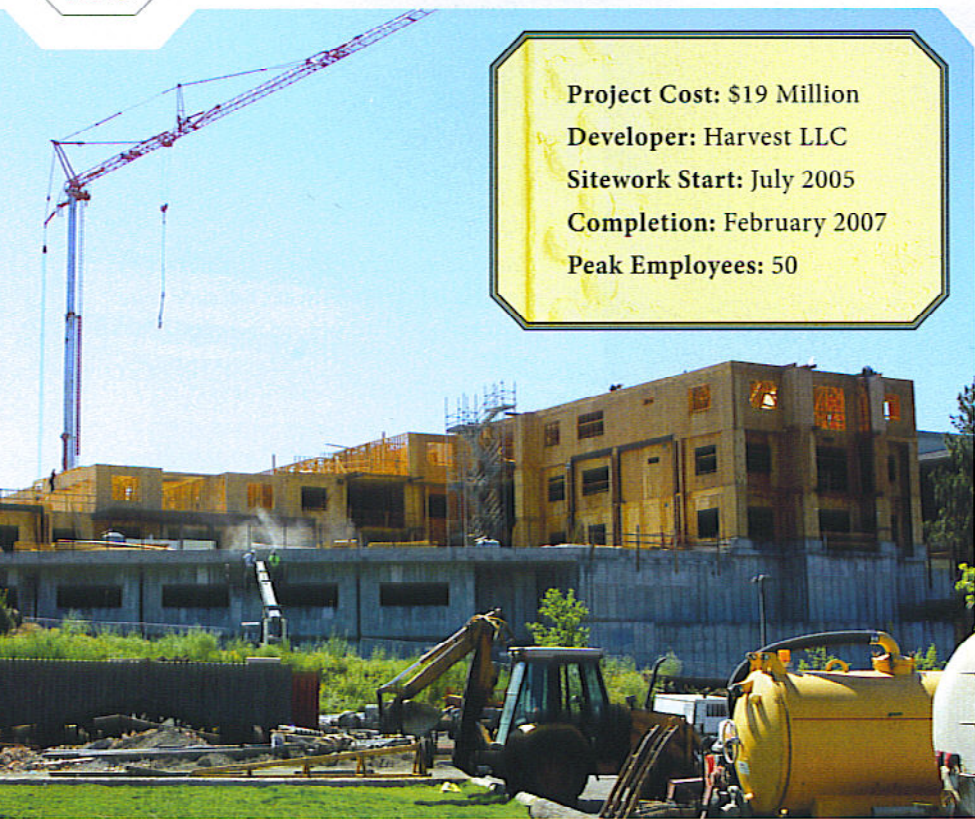


BEND



**Project Cost:** \$19 Million  
**Developer:** Harvest LLC  
**Sitework Start:** July 2005  
**Completion:** February 2007  
**Peak Employees:** 50

#### Contractor

Dalke Construction Co.  
PO Box 5170  
Salem, Oregon  
503/585-7403

#### Square Footage:

88,800  
**Amenities:** Forty-two condominiums in five floor plans ranging in size from 1,700 to 2,000 square feet each with two master suites and two master bathrooms; spacious lobby with fireplace; party room with gas fireplace, plasma big-screen television, game tables and library; green roof with lawn, shrubs and trees; underground parking capacity for 80 vehicles.

**Financing:** Umpqua Bank Contractor

#### Project Manager:

Rick Arendt  
**Superintendent:** Cory Hancock  
**Design Architect:** Phillips Architecture and Planning, Bend  
**Construction Architect:** Studio 3 Architecture, Salem  
**Structural Engineer:** ABHT Structural

Engineers - Portland  
and Fine Engineering - Snohomish WA

**Mechanical Engineer:**  
CEA Engineers - Bend

**Electrical Engineer:** Heinekin  
Engineering - Bend

**Civil Engineer:** Hickman, Williams &  
Associates - Bend

**Geo Engineering:** Kleinfelder - Bend  
**Acoustic Engineer:** Listen Acoustics-  
Portland

#### Landscape Architect:

Lando Associates - Portland



The luxury residency located in the heart of the Old Mill District in Bend overlooks the Deschutes River with Cascade Mountain views on each of four levels. A little over 30,000 square feet of underground parking complete with storage units includes high entries for sports utility vehicles

or overhead racks. The formal entry leads to a spacious lobby with an oversized gas fireplace. There's a 1,500 square foot party room complete with large-screen plasma TV, game tables and library in Tuscan styling. The green deck above the parking garage will be turf-covered with an abundance of native shrubs and trees and offers great views of the river with secured railings. Each unit has a patio deck and the ceilings are 10-feet high on the first level, nine-feet high on the second and third levels and then expand to vaulted ceilings on the fourth floor. Extra-wide hallways and secure, sound control are geared to privacy. Each unit is also wired for high-speed Internet and surround-sound home theatre systems. Quality appliance packages of stainless steel include a full-sized washer and dryer and granite countertops. Two elevators access all levels and there is a snow-melt system for the garage and building entries. Prices start at \$539,900 with Becky Breeze (541/617-5700) serving as the broker.

#### Subcontractors & Suppliers

Advanced Products and Solutions, Ameritech Machine Manufacturing, Axis Construction Inc., DMI Drilling, Fire Systems West, Home Technologies, JeldWen Windows and Doors, Keizer Electric, Latham Excavation Inc., Mountain View Heating, Ogden Construction, Oregon Cascade Plumbing and Heating, Otis Elevator Co., SecureCom, Weyerhaeuser.